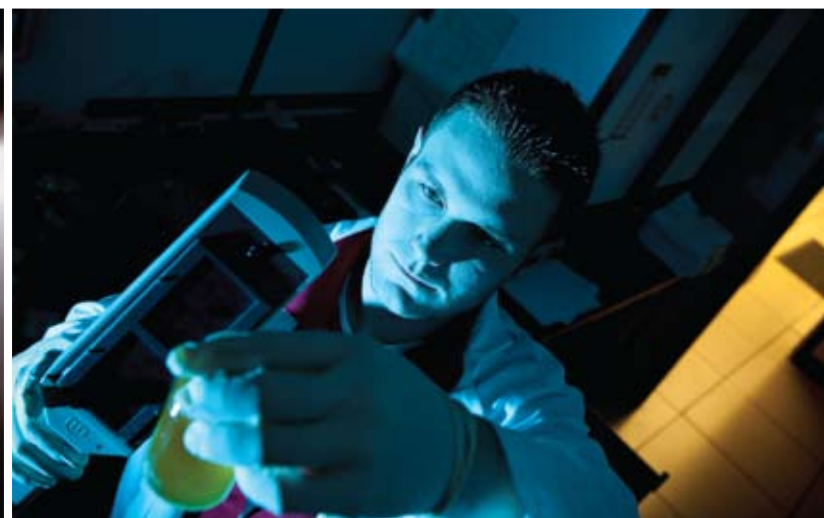


2009 Annual Report

Tulsa Health Department





FROM THE INTERIM DIRECTOR

2009 was a year of transition for the Tulsa Health Department (THD) with many exciting accomplishments, organizational changes and opportunities to improve services and health outcomes in the community. It was a year in which we said a fond farewell to two long-time partners in health including former Director, Gary Cox and Gary Woodruff, Chief Operating Officer who collectively provided 79 years of service to Tulsa County.

Partnerships and active participation continued to be an important precursor to advances in public health. THD staff actively supported Oklahoma's first Health Improvement Plan which will guide policy and practice for years to come. Locally, staff from a variety of disciplines helped lay the groundwork for GreaterTHAN, the Greater Tulsa Health Access Network which will improve coordination and the quality of care among the many area health systems.

THD remains proud to have been the first regionally accredited public health organization in the nation. Oklahoma can be proud that in 2009, it was the only state with a state, local and tribal public health organization selected to undergo the beta testing for national accreditation.

As you read the annual report, you will find other programs in which THD has taken the lead in preventing disease, promoting health and protecting the citizens of Tulsa County. Undoubtedly, you will be surprised to learn how many programs are provided through THD and the number of Tulsa County residents we are able to assist.

Still, significant opportunities persist. Perhaps, the most exciting development is the planned North Regional Health and Wellness Center which will serve as a new model for multi-disciplinary health care delivery and community driven best practices. In 2009, THD opened the doors of a temporary North Regional Health Center to introduce the community to our services.

It is a new era in public health; one in which we are striving to achieve a higher level of strategic planning, collaboration and service. I hope you will join us and the many other organizations and individuals who are our partners in health as we work for a better, brighter and healthier tomorrow for all.

Sincerely,

Reggie Ivey



Children First Nurse Karen DeBella conducts a home visit with community resident Grace Nbiritu and her 20 month old son David.

VISION

A community of empowered citizens making healthy choices that carry forward for future generations.

MISSION

To sustain an equitable system that prevents disease, promotes healthy living, and ensures preparedness.

VALUES

Health equity, collaboration, community empowerment, healthy people, healthy environment, service excellence.

It's All About Kids Physical Education Instructor Lyle Price works with area elementary students.



COMMUNITY HEALTH SERVICES

Safer, Healthier Living

THD's far-reaching community health programs focus on prevention and education to promote healthy lifestyle choices. Community health programs also seek to remove barriers for the uninsured and underserved.

IT'S ALL ABOUT KIDS

Wellness for Elementary School Children

It's All About Kids is a prevention program for elementary school-aged children that encourages kids to make healthy choices and habits for a brighter future. The program focuses on reducing obesity, promoting healthy lifestyles, and improving school performance and decision-making skills. The program's services include health, physical and nutritional education, as well as social services, parenting and school personnel health education.

It's All About Kids is offered in 16 elementary schools. Of over 2,000 students tested, the percent of elementary students who were overweight (BMI 85th percentile) ranged from 14 – 25% in each school. The percent considered obese (BMI 95th percentile) ranged from 15 – 32%.

In 2009, the It's All About Kids program served approximately 6,214 students. The Social Worker and Nurse Case Manager directly assisted 171 families including conducting 91 home visits.

TULSA FETAL INFANT MORTALITY REVIEW PROGRAM (TFIMR)

Working to Reduce Infant Mortality

The TFIMR program studies fetal and infant deaths in our community to identify trends and implement systems changes to reduce Tulsa County's infant mortality rate. The TFIMR Case Review Team reviews physician and hospital records and conducts parent interviews. This information is shared with a Community Action Team which identifies, develops and facilitates policy and system changes such as Help Us Wake Up Tulsa!, an initiative to increase awareness of safe sleep practices.

In 2009, 72 case reviews including 27 parent in-home interviews and six parent telephone interviews were conducted.

WORKING FOR BALANCE

Promoting Wellness on the Job

Working for Balance is a workplace wellness program designed to contain corporate health-related costs by promoting changes in personal health practices among employees. Developed through a partnership with OU Physicians and YMCA of Greater Tulsa, the program provides resources, education and technology to implement and manage customized wellness initiatives.

Working for Balance provides ongoing support including e-mail updates on health related information to over 100 company contacts and health screenings for community-based organizations, non-profits and school staff in Tulsa County.

In 2009, Working for Balance established a Wellness Leader's Academy offering monthly training to 22 Tulsa-area wellness coordinators, received the Oklahoma Certified Healthy Business Excellence Award, American Heart Association Fit-Friendly Business, American Heart Association Worksite Innovation Award and Community Innovation Award and the YMCA of Greater Tulsa Partner in Fitness Award.

HEART IMPROVEMENT PROJECT (HIP)

Screening for Heart Disease

Started in summer of 2008, the Heart Improvement Project is a pilot program to reduce heart disease through medication management, early detection and education. The project strategically targets two Tulsa north zip codes which rank among the poorest for overall health and among the highest for deaths from heart disease (74126 and 74106).

Participants receive a health screening, medication consultation, on-going education about heart disease risk factors and the support of a case manager.

Participants have shown improved blood pressure, lipids and glycosylated hemoglobin. HIP is a partnership between the University of Oklahoma School of Community Medicine and Neighbor for Neighbor and is funded by the George Kaiser Family Foundation.

CHILD GUIDANCE

Healthy Development for Children and Families

Child Guidance is a state-wide program that promotes and supports healthy family relationships and child development. Child Guidance includes behavioral health services, early childhood development and parent education services and audiology services.

Child Guidance services are available to families of children birth through age 12. Services are provided on a sliding fee scale based on income and number of people in the family.

In 2009, Child Guidance provided clinic-based services for 1,373 clients, 135 hours of consultation to 12 day care centers, and conducted 123 classes at community partner sites.

THE MATCH (MOBILIZING AGAINST TOBACCO COMPANIES' HYPE) PROJECT

Snuffing out Tobacco Addiction

MATCH (Mobilizing Against Tobacco Companies' Hype) is a tobacco use prevention program working to significantly reduce adult and youth addiction to tobacco products through cessation help, community counter-marketing and classroom presentations.

In 2009, the MATCH program received its first Tobacco Settlement Endowment Trust grant to conduct a targeted advertising campaign for the Hispanic and African American population and to promote the quit-stop hotline. In Oklahoma, 4.4% of smokers called the quitline. Oklahoma ranks 14th among the states for quitline utilization. In 2009, there were 37,855 Helpline registrants statewide and 5,513 Tulsa County tobacco users registered for a call intervention.

MATCH staff also work with area businesses and schools to encourage tobacco free campuses and support legislation to restrict tobacco use in public places. In 2009, MATCH assisted a number of organizations develop tobacco-free policies including University of Oklahoma Schusterman Center, Parkside Psychiatric Hospital & Clinic, Big Splash Water Park and Tulsa Public Schools.

WOMEN, INFANTS AND CHILDREN (WIC)

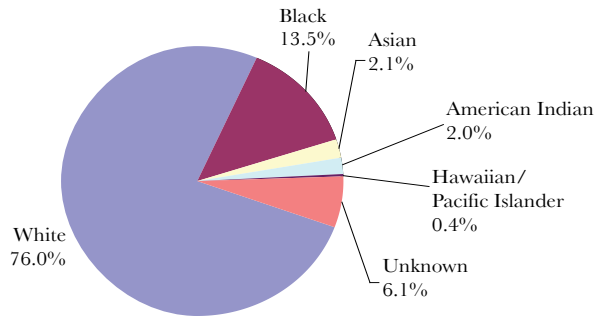
Encouraging Healthy Eating

WIC is a Federal grant program that safeguards the health of income-eligible women, infants and children up to age five who are at nutritional risk. The program provides vouchers for nutritious foods, information on healthy eating and referrals for health care. The WIC program accepts clients who have incomes of 185% of poverty or less and who live in Oklahoma.

WIC serves an average of 12,500 clients per month. The last two years have seen record high participation in WIC.

In 2009, the Tulsa Health Department WIC program served 156,500 clients, an 8% increase from the previous year. There were 7,087 new clients accounting for 22.3% of the total.

**WIC
Race of Clients 2009**



TULSA HEALTHY START INITIATIVE

Helping Tulsa Babies Stay Safe and Well

Healthy Start is a federally funded community-based program that serves at-risk women and works to reduce the number of infant deaths by offering healthy messages and support for families. In 2009, Healthy Start served 370 Tulsa families by providing:

- Assistance with prenatal care
- Access to well-baby visits
- Childhood immunizations
- Referrals to WIC services
- Family planning assistance
- Links to social services for jobs, child care, housing and education

Transportation can be a significant barrier to accessing health care and prevention services. The George Kaiser Family Foundation funds the Healthy Start transportation program providing rides to primary care and OBGYN appointments and access to social services including the Department of Human Services, Tulsa Housing Authority and Domestic Violence Intervention Services. The transportation program served 173 clients providing rides for 1,785 individuals and family members during 2009.

SOCIAL WORK / OUTREACH

Overcoming Barriers to Better Health

Some families need help to connect to the most appropriate health care services effectively, as well as address their basic needs. THD employs social workers in a variety of programs, including the Healthy Women, Healthy Futures program. This project is funded through the George Kaiser Family Foundation and administered through the OU College of Nursing.

Raising Educational Awareness for Community Health (REACH) provides outreach staff to complete home visits and canvass neighborhoods to connect clients to health services. Outreach services utilize educational home visits to find and help families in need of family planning, prenatal or child health care and referrals for basic needs.

The outreach staff spent much of 2009 reaching out to the community surrounding the new North Regional Health Center to ensure residents were aware of available services.

During 2009, outreach staff canvassed 751 hours knocking on 11,769 doors. They completed 1,456 home visits and assisted 323 clients in completing Soonercare (Medicaid) paperwork.

*Outreach Worker Kashara Roberts educates
Tulsa County residents about THD programs.*





Children First Nurse Ann Glenn weighs 15 month old Nadia Clark at a home visit check-up.

PERSONAL HEALTH SERVICES

Making Healthy Choices

THD's Personal Health Services programs provide direct, essential health care services focused on disease prevention through education, screenings and immunizations.

CHILDREN FIRST (C1)

Preparing First-Time Mothers for Parenthood

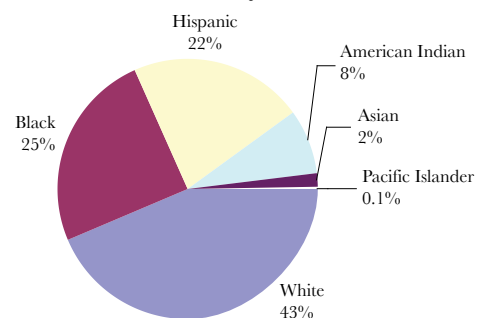
Children First is a family-centered program that utilizes home visits by registered nurses (RNs) to help first-time mothers and their families prepare for parenthood. Services include:

- RN home visits throughout pregnancy until the baby is two
- Family medical history and health and nutrition assessment
- Physical exam and measurement of the infant or child
- Home Environment Assessments
- Education on family planning, parenting, child development and preventative safety
- Targeted Case Management
- Referrals to resources based on family needs

Most C1 clients are referred by partner organizations including Babyline, Tulsa Area Case Management Programs, university clinics, area hospitals and faith-based resources.

In 2009, 751 new clients were referred to C1 and 9,418 home visits were completed.

Children First Program Race/Ethnicity of Clients





THD Nurse Paloma Gowens prepares to administer a childhood vaccination to Jorge Perez.

IMMUNIZATIONS

THD provides ½ of all vaccines in Tulsa County. In 2009, 98,801 individual clients received 137,906 vaccinations through THD.

CHILDHOOD IMMUNIZATIONS

An Important, Free Service

THD provides free childhood immunizations according to the Centers for Disease Control's recommended childhood and adolescent immunization schedule. Immunizing children mobilizes the body's natural defense against dangerous infectious diseases. Vaccinations are available at all THD clinic locations. THD is also proud to partner with Blue Cross Blue Shield to provide mobile vaccinations to schools and daycares using the Caring Van Program. The Caring Vans made 4,382 visits and administered 6,294 immunizations. In 2009, there were 55,694 children clinic visits at which a total of 89,847 vaccinations were administered

ADULT IMMUNIZATIONS

Making Sure Adults are Protected

Even adults require immunizations and boosters. THD can help determine individual needs by reviewing medical and immunization history, your lifestyle, travel plans and other factors. THD adult immunizations are provided for adults 19 or older. In 2009, over 50,000 adult immunizations were administered including over 2,000 Hepatitis, over 100 Gardasil and over 200 Zostavax, a vaccine for shingles.

OVERSEAS IMMUNIZATIONS

Protection for Travel Abroad

THD offers immunizations for children and adults traveling abroad. Our helpful staff can provide recommendations on which immunizations to receive. In 2009, THD provided service to 2,014 travelers and administered 3,499 overseas immunizations including over 1,000 Typhoid and 579 Yellow Fever immunizations.

FLU IMMUNIZATIONS FOR CHILDREN AND ADULTS

Protection Against Influenza

Receiving a flu immunization is the best method of protection from influenza. THD administers flu vaccine free of charge beginning in the fall. In 2009, THD administered 51,167 H1N1 vaccinations at its clinics and numerous locations throughout the county. THD also administered over 20,000 doses of seasonal flu vaccine.

DENTAL SERVICES

Healthier Smiles for Children

THD provides preventative dental care and treatment for Tulsa County children who are uninsured or have minimal benefits. Services include dental examinations and cleanings, fluoride treatments, sealants, fillings, crowns, endodontics and extractions. These services are available at the Central Regional Health Center. In 2009, THD provided dental services to 760 children for a total of 1,360 clinic visits. These services are available at the Central Regional Health Center. A grant from the George Kaiser Family Foundation provided dental services for 289 of these children in 2009.

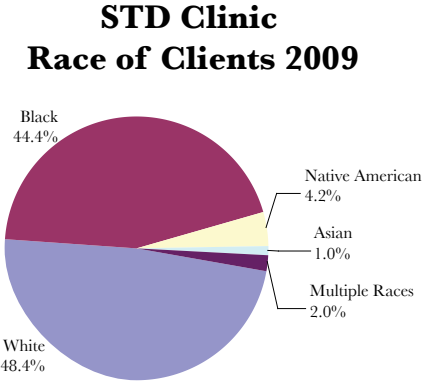
COMMUNICABLE DISEASE CONTROL

Confidential Testing and Treatment

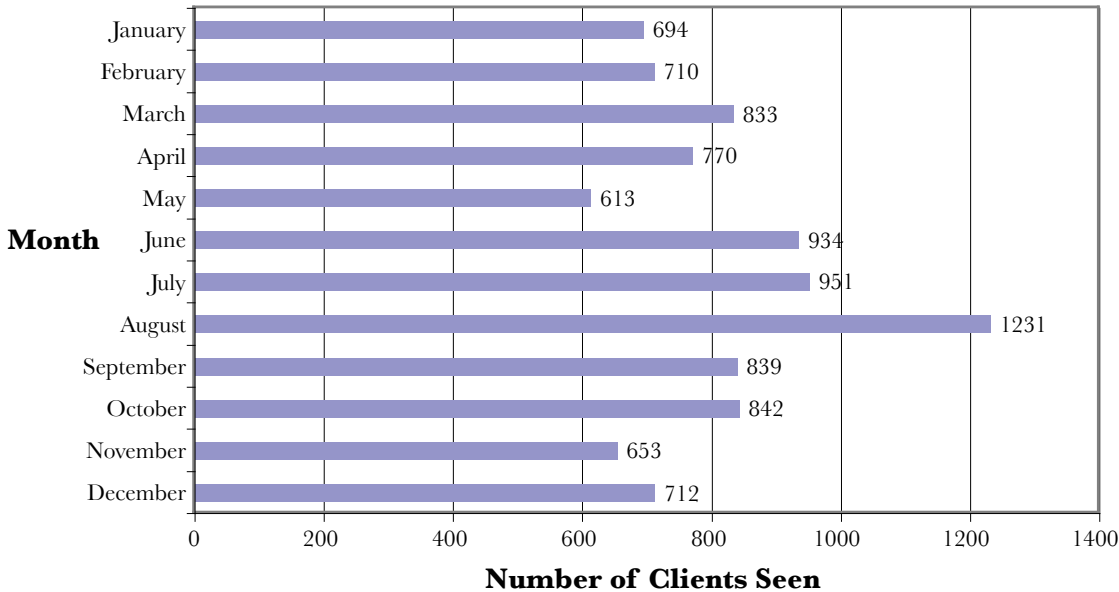
Testing for certain diseases not only enables early medical treatment; it often helps stop the spread of infectious diseases within the community. THD provides low and/or no-cost testing services and can recommend treatment resources if necessary for:

- Sexually Transmitted Diseases
- HIV & Counseling
- TB Testing & Clinic

The STD clinic provides full-time access for evaluation, testing and treatment of sexually transmitted illness/ infection. The clinic provides a full range of services at low cost for those most at risk due to social or economic disparities. *Over 5,000 clients visited the STD clinic in 2009.*



Tuberculosis Clinic Total Clients Seen by Month



The Tuberculosis (TB) Control program had 9,782 clients in 2009 reflecting a 13% increase from 2008. There were 14 confirmed cases of active TB in Tulsa County in 2009. The THD preventive therapy completion rate is 78% which is 13% higher than the national rate.

ADULT HEALTH SCREENING

Early Detection Is Key

In 2009, a total of 1,796 patients were seen through the Adult Health and Take Charge! programs. The Take Charge! program provides free breast and cervical cancer screening to women ages 40 – 64 who meet health insurance or income guidelines. Services to women who meet the program guidelines include:

- Female health history
- Cancer risk history
- Well-woman assessment
- Clinical breast exam
- Pap smear and limited screening pelvic exam
- Education for lowering your cancer risk
- Coupon for a free mammogram
- Referral and follow-up for women with abnormal results

Other adult health screenings available at minimal cost include hypertension, diabetes, high cholesterol, and anemia.

VITAL RECORDS

The Tulsa Vital Records program is a satellite office of the Oklahoma State Department of Health Center for Health Statistics Vital Records Division. Services are provided at the Central Regional Health Center. Certified copies of birth and death certificates are issued with a completed application, required information and fees. For the calendar year 2009, services were provided to 40,041 walk-in applicants and 3,152 funeral director applicants. A total of 43,121 certified birth certificates and 55,058 certified death certificates were issued.

FAMILY PLANNING PROGRAM

Counseling and Services

THD offers comprehensive family planning services including physical examinations, laboratory services, pregnancy testing, contraceptives, counseling and referrals for other THD and community services.

In 2009, THD staff provided Family Planning services to more than 6,300 clients at five locations including long acting reversible contraceptives (LARC). In 2009, THD provided LARC including Mirena, Paragard and Implanon to 215 clients. LARC first became available through THD in fall of 2009 with funding from the George Kaiser Family Foundation.

*Food Establishment Inspector Rich Peterson consults with
Platt College's Culinary Chef Jeff Howard and staff.*



CONSUMER PROTECTION & ENVIRONMENTAL HEALTH SERVICES

Regulatory Services for Safer Surroundings

Health and well-being are influenced by many environmental factors, including the safety of the food we eat, the air we breathe and the water we drink. Through its regulatory roles, THD Consumer Protection and Environmental Health Services help safeguard the public's health by inspecting and enforcing regulations, codes and laws that impact our community's overall health and safety.

CONSUMER PROTECTION

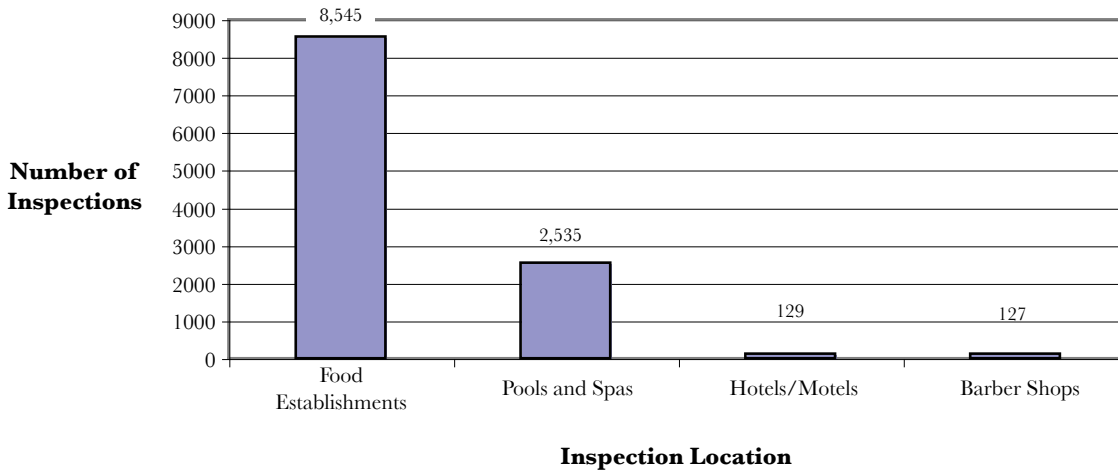
Protecting Our Food and More

The Consumer Protection Division (CPD) works to safeguard public health through education on safe food handling practices and the regulation of food service establishments including restaurants, grocery and convenience stores, school and hospital cafeterias, warehouses and food processors, and mobile food vendors and temporary food sales at special events. CPD also inspects and regulates public swimming pools, barbershops, and hotels and motels.

CPD is responsible for regulating over 3,600 food establishments and conducts over 8,500 inspections each year. In 2009, an electronic inspection system for online inspections of food establishments, pools, lodging and barbershops was launched. As a result, inspection results are available online at www.tulsa-health.org/food-safety/restaurant-inspections/. CPD is also responsible for providing initial training for food workers. For example, CPD issued 26,203 food handler permits in 2009.

Epidemiologists in this division are responsible for investigating communicable disease and acute diseases in Tulsa County. They work closely with the medical community, Oklahoma State Department of Health and Tulsa County citizens to provide education and referrals to prevent the spread of diseases like Hepatitis, H1N1 and Meningitis.

Consumer Protection Inspections 2009



ENVIRONMENTAL HEALTH SERVICES

Protecting Our Water, Air and More

THD Environmental Health Services works to enforce state laws and city and county regulations to decrease negative environmental factors and health nuisances. Areas addressed include sanitation, housing code compliance, rodent and mosquito control and air quality concerns. This year the THD mosquito control program partnered with Oklahoma State University on a mosquito trapping and surveillance study to monitor West Nile virus activity.

In 2009, staff responded to 3,286 investigations, inspections and concerns. There were approximately 1,400 requests for mosquito spraying which resulted in 206 square miles being sprayed for mosquitoes.

The environmental laboratory provides Tulsa County and eastern Oklahoma with testing capabilities for bacterial and inorganic contaminants in public and private water supplies. The laboratory also provides lead-based paint testing. The laboratory conducted 12,240 tests in 2009.



Samples of water are tested by THD Laboratory staff.

Community residents receive H1N1 and seasonal flu vaccinations at ORU Mabee Center.



EMERGENCY PREPAREDNESS & RESPONSE

Being Ready Should Disaster Strike

Being prepared in the event of a terrorist attack, natural disaster, or other large-scale emergency or public health threat is a necessary part of today's world. THD works with other community organizations including Tulsa-area hospitals, EMSA, Tulsa Police Department, Tulsa Fire Department, Tulsa Mayor's Action Center, Tulsa Area Chapter of the American Red Cross and Tulsa Area Emergency Management Agency to meet the public's needs during emergencies.

EMERGENCY RESPONSE VOLUNTEERS

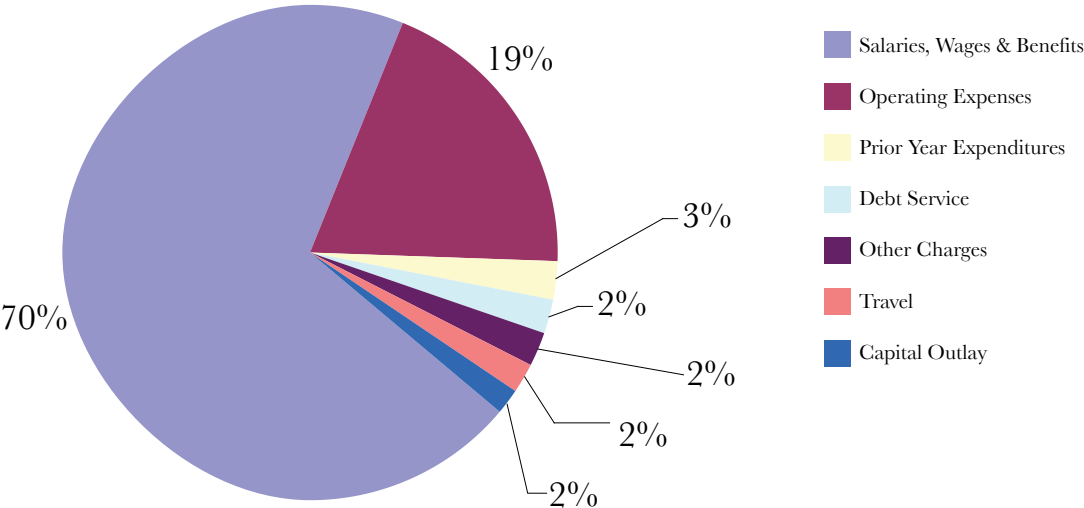
Assisting the Community in Times of Danger

During a large-scale emergency or disaster, it is critical that trained volunteers be available to assist THD and other local response agencies. The Medical Reserve Corps is a federal program that works in concert with local representatives to identify qualified volunteers who can assist public health during disasters.

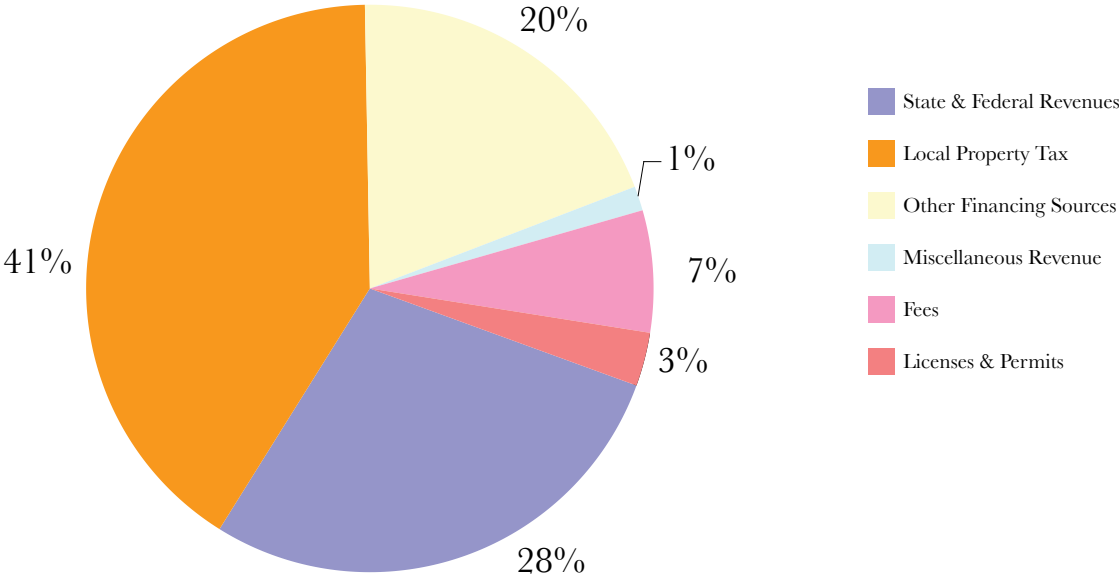
In 2009, Medical Reserve Corps volunteers played an important role in responding to the H1N1 influenza outbreak by assisting in area vaccination clinics.

THD administered approximately 52,000 doses of H1N1 vaccine to Tulsa County residents in 2009. 22,000 of the H1N1 vaccinations given were provided at eight mass clinic sites including the ORU Mabee Center, Expo Square Fairgrounds, and Tulsa Community College North and West campuses. Over 10,000 of the vaccinations were given by teams of THD nurses and staff at 64 locations including school sites, shelters, and the Tulsa International Airport. The clinics were held on weekends and evenings to reach as many citizens as possible. THD also distributed H1N1 vaccine through their clinic locations, the Caring Van, and in partnership with private providers.

THD Expenditures | 2009



THD Revenues



BOARD OF HEALTH

Dedicated to Serving the Community

The Tulsa City-County Board of Health acts in an advisory capacity to the THD Director of Health. The Board sets public health policies and helps establish the THD annual budget. In all that they do, the Board's appointed members and the Director of Health strive to safeguard and promote the health of the people they serve.

BOARD OF HEALTH MEMBERS

Mr. W.H. (Rik) Helmerich

Chair

Dr. Patrick Grogan, DVM

Vice-Chair

John L. Herndon

Secretary/Treasurer

Betty Boyd

Gary D. Burnidge, D.D.S., M.S.

Geraldine Ellison, Ph.D., R.N.

Delilah Christine Zarate-Gentges

James O. Goodwin, J.D.

Nancy B. Keithline

THD FACILITIES & LOCATIONS

James O. Goodwin Health Center
5051 S. 129th E. Ave.
Tulsa, OK 74134

Central Regional Health Center
315 S. Utica
Tulsa, OK 74104

Expo Square Health Center
4616 E. 15th St.
Tulsa, OK 74112

North Regional Health Center
5424 North Madison Avenue
Tulsa, OK 74126

Bixby Community Health Center
8120 E. 126th Street
Bixby, OK 74008

Collinsville Community Health Center
1201 W. Center
Collinsville, OK 74021

Sand Springs Health Center
306 E. Broadway
Sand Springs, OK 74063

Women Infants & Children (WIC) Clinics

Mingo WIC Clinic
10350 East 21st Street
Tulsa, Oklahoma 74129

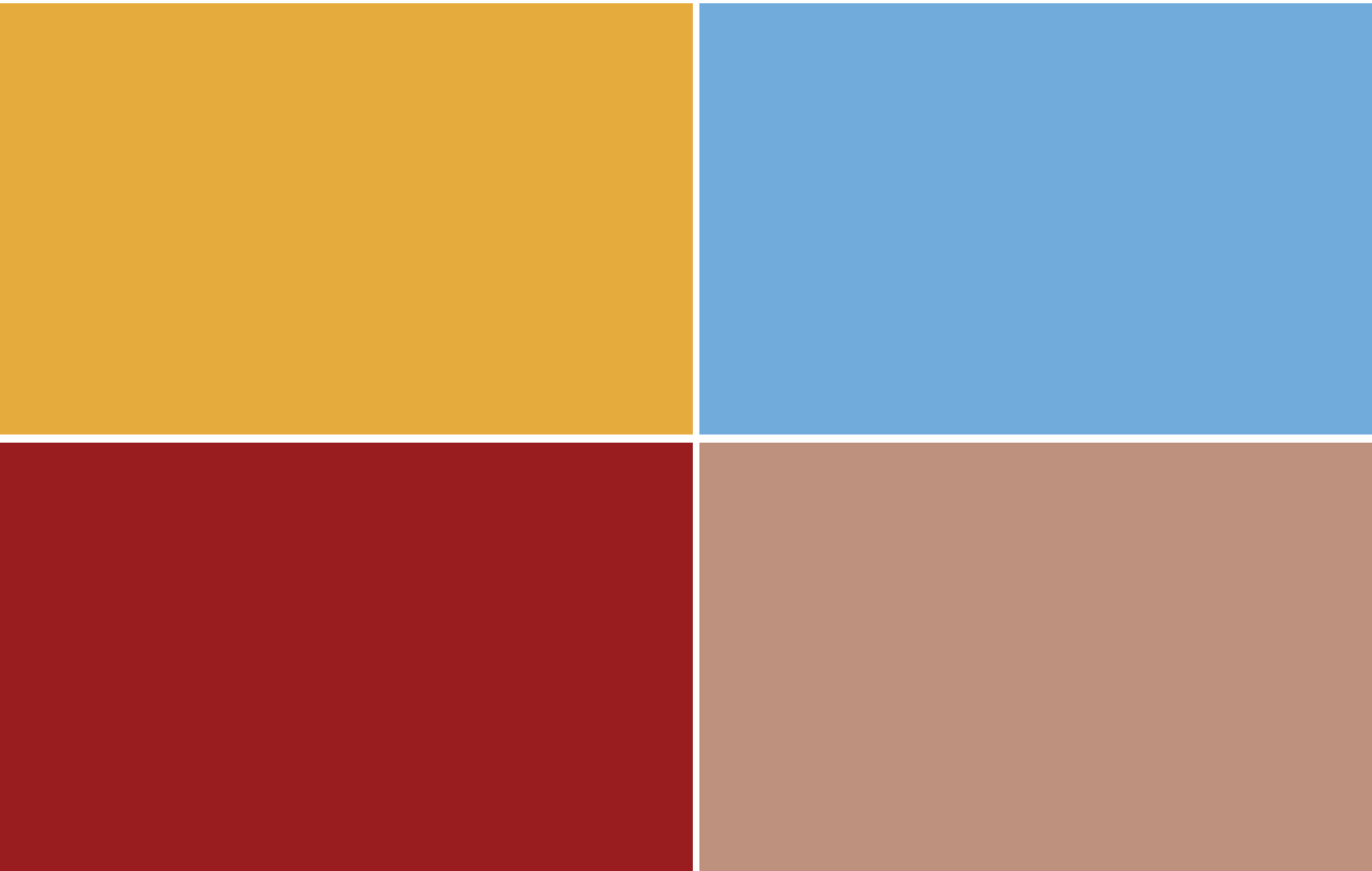
South Peoria WIC Clinic
5812 S. Peoria
Tulsa, OK 74105-8407

Neighbors Along the Line Clinic
5000 W. Charles Page Blvd.
Tulsa, OK 74127



TULSA HEALTH
DEPARTMENT

918.582.WELL
www.tulsa-health.org



2009 Annual Report

Tulsa Health Department

